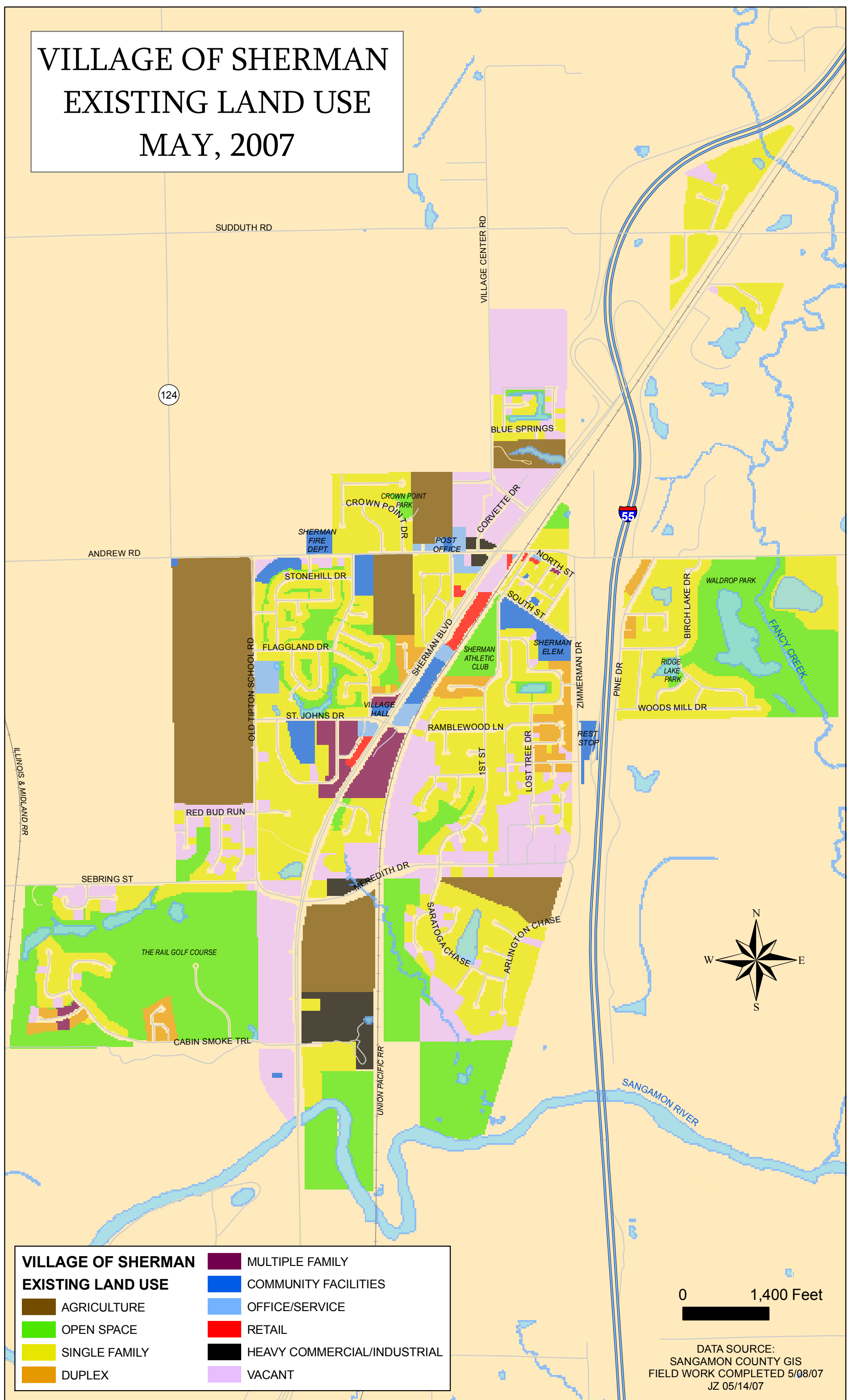


VILLAGE OF SHERMAN EXISTING LAND USE MAY, 2007



VILLAGE OF SHERMAN EXISTING LAND USE	
	AGRICULTURE
	OPEN SPACE
	SINGLE FAMILY
	DUPLEX
	MULTIPLE FAMILY
	COMMUNITY FACILITIES
	OFFICE/SERVICE
	RETAIL
	HEAVY COMMERCIAL/INDUSTRIAL
	VACANT

0 1,400 Feet

DATA SOURCE:
SANGAMON COUNTY GIS
FIELD WORK COMPLETED 5/08/07
JZ 05/14/07